



**Pecos Casita
Custom Design**

**30' x 50' Barn w/Apartment
1500 Square Feet**

Initial Doc. Date: 05/09/2025

Revision Date: 03/26/2025

Revision #R1j

This document is for illustrational purposes only (it has not been reviewed by an architect or engineer unless otherwise stated in or on this document) and should not be relied on for any purpose other than illustration and general layout of building.

Barnhouse Co., and affiliates assume no liability or responsibility for any mistakes, or errors herein.

All rights reserved by Barnhouse Co. This document and the information contained herein are confidential and protected from disclosure pursuant to Federal law. Use, dissemination, or copying of this information is strictly prohibited. If you received this document in error, please erase all copies and attachments and notify the sender immediately.

Customer Responsible to verify all local, state, and any jurisdictional codes and building requirements.

Barn House Company

**1900 Louisville Rd. Ste. 107
Bowling Green KY 42101**

3D View

Page 1 of 12



3D Drawing are for illustrational purposes only and do not represent the actually finishes and or fixtures.



**Pecos Casita
Custom Design**

30' x 50' Barn w/Apartment
1500 Square Feet

Initial Doc. Date: 05/09/2025

Revision Date: 03/26/2025

Revision #R1j

This document is for illustrational purposes only (it has not been reviewed by an architect or engineer unless otherwise stated in or on this document) and should not be relied on for any purpose other than illustration and general layout of building.

Barnhouse Co., and affiliates assume no liability or responsibility for any mistakes, or errors herein.

All rights reserved by Barnhouse Co. This document and the information contained herein are confidential and protected from disclosure pursuant to Federal law. Use, dissemination, or copying of this information is strictly prohibited. If you received this document in error, please erase all copies and attachments and notify the sender immediately.

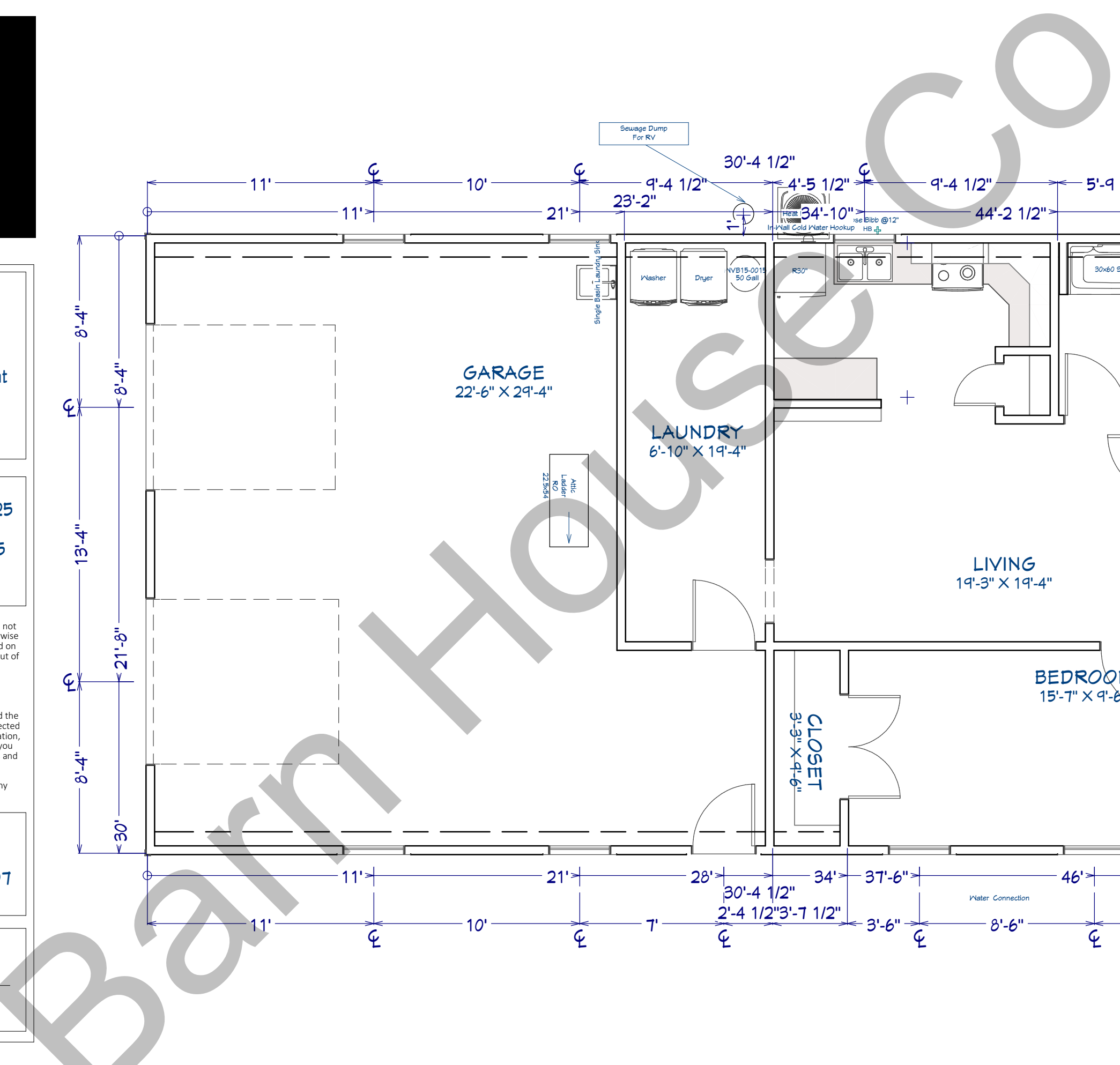
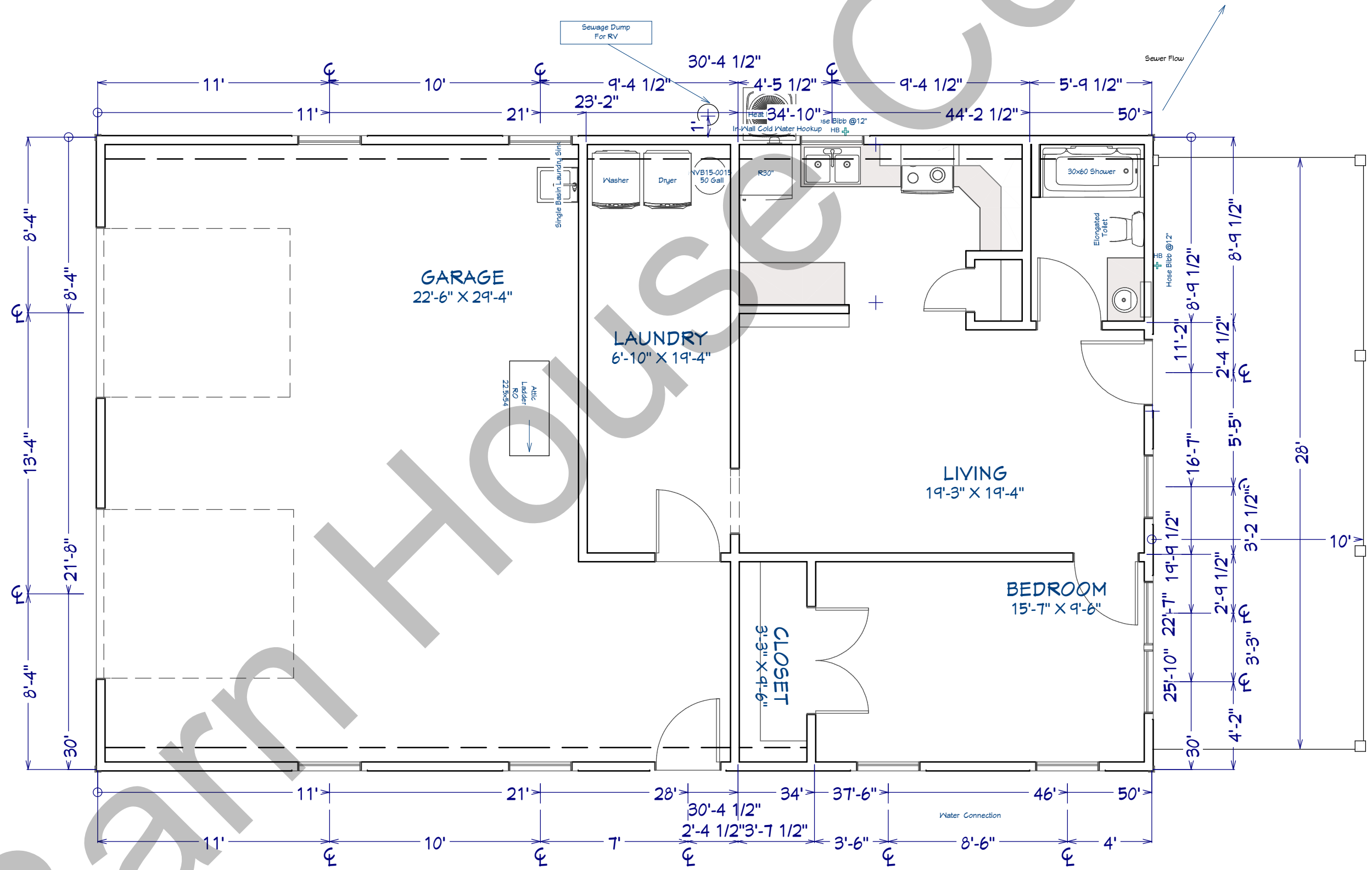
Customer Responsible to verify all local, state, and any jurisdictional codes and building requirements.

Barn House Company

1900 Louisville Rd. Ste. 107
Bowling Green KY 42101

Full Layout

Page 2 of 12





**Pecos Casita
Custom Design**

**30' x 50' Barn w/Apartment
1500 Square Feet**

Initial Doc. Date: 05/09/2025

Revision Date: 03/26/2025

Revision #R1j

This document is for illustrational purposes only (it has not been reviewed by an architect or engineer unless otherwise stated in or on this document) and should not be relied on for any purpose other than illustration and general layout of building.

Barnhouse Co., and affiliates assume no liability or responsibility for any mistakes, or errors herein.

All rights reserved by Barnhouse Co. This document and the information contained herein are confidential and protected from disclosure pursuant to Federal law. Use, dissemination, or copying of this information is strictly prohibited. If you received this document in error, please erase all copies and attachments and notify the sender immediately.

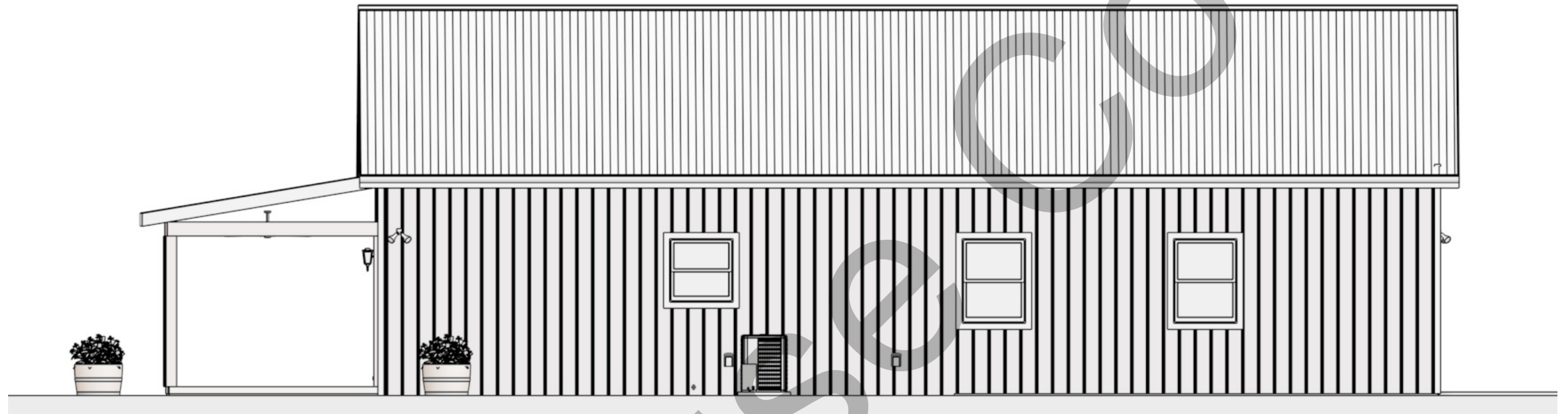
Customer Responsible to verify all local, state, and any jurisdictional codes and building requirements.

Barn House Company

**1900 Louisville Rd. Ste. 107
Bowling Green KY 42101**

Front Elevation

Page 3 of 12



Exterior Notes

Exterior Wainscot:

- N/A
- 36" Height - N/A
- Color: TBD

Decks:

- 6" x 6" Treated Lumber 120" OC
- Brackets on Concrete - secured
- 2/12 Slope on Front Deck
- Color: Cedar Stain



**Pecos Casita
Custom Design**

**30' x 50' Barn w/Apartment
1500 Square Feet**

Initial Doc. Date: 05/09/2025

Revision Date: 03/26/2025

Revision #R1j

This document is for illustrational purposes only (it has not been reviewed by an architect or engineer unless otherwise stated in or on this document) and should not be relied on for any purpose other than illustration and general layout of building.

Barnhouse Co., and affiliates assume no liability or responsibility for any mistakes, or errors herein.

All rights reserved by Barnhouse Co. This document and the information contained herein are confidential and protected from disclosure pursuant to Federal law. Use, dissemination, or copying of this information is strictly prohibited. If you received this document in error, please erase all copies and attachments and notify the sender immediately.

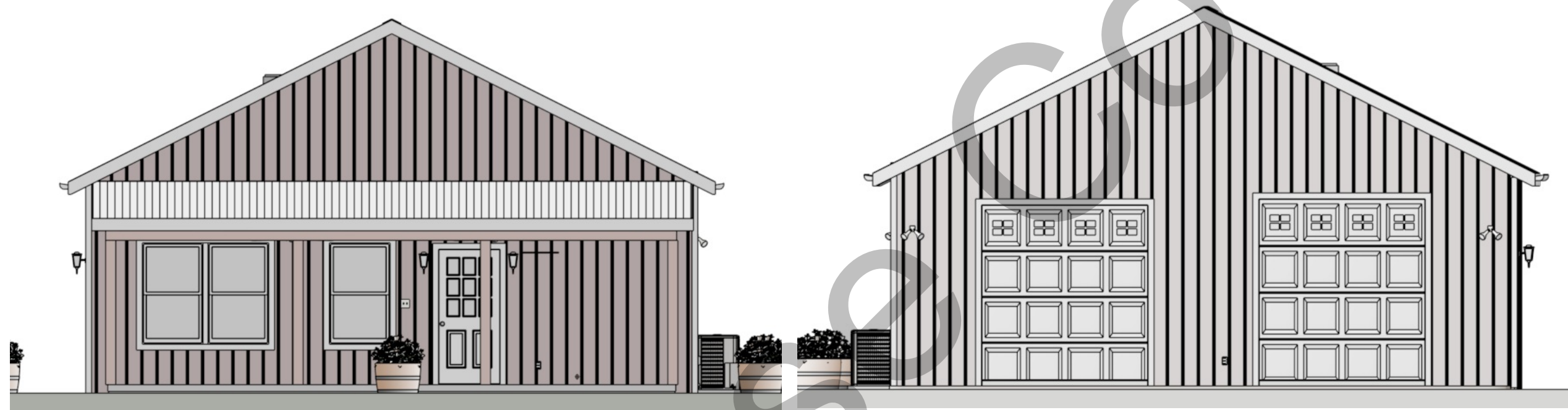
Customer Responsible to verify all local, state, and any jurisdictional codes and building requirements.

Barn House Company

**1900 Louisville Rd. Ste. 107
Bowling Green KY 42101**

Side Elevation

Page 4 of 12



Garage Ceiling: 10' Flat

Apartment Ceiling: 10' Flat

Barn/Shop Roof: 6/12 Pitch

Fascia Height: 120"

Front Deck: Single Slope 2/12 Pitch



**Pecos Casita
Custom Design**

**30' x 50' Barn w/Apartment
1500 Square Feet**

Initial Doc. Date: 05/09/2025

Revision Date: 03/26/2025

Revision #R1j

This document is for illustrational purposes only (it has not been reviewed by an architect or engineer unless otherwise stated in or on this document) and should not be relied on for any purpose other than illustration and general layout of building.

Barnhouse Co., and affiliates assume no liability or responsibility for any mistakes, or errors herein.

All rights reserved by Barnhouse Co. This document and the information contained herein are confidential and protected from disclosure pursuant to Federal law. Use, dissemination, or copying of this information is strictly prohibited. If you received this document in error, please erase all copies and attachments and notify the sender immediately.

Customer Responsible to verify all local, state, and any jurisdictional codes and building requirements.

Barn House Company

**1900 Louisville Rd. Ste. 107
Bowling Green KY 42101**

Other Images

Page 5 of 12

