



Lansing Custom Home

32' x 56' Custom Home
1792 sq. ft. Living Area
28' x 32' Garage

Initial Doc. Date: 12/03/2024

Revision Date: 03/25/2025

Revision #R1f

This document is for illustrational purposes only (it has not been reviewed by an architect or engineer unless otherwise stated in or on this document) and should not be relied on for any purpose other than illustration and general layout of building.

Barnhouse Co., and affiliates assume no liability or responsibility for any mistakes, or errors herein.

All rights reserved by Barnhouse Co. This document and the information contained herein are confidential and protected from disclosure pursuant to Federal law. Use, dissemination, or copying of this information is strictly prohibited. If you received this document in error, please erase all copies and attachments and notify the sender immediately.

Customer Responsible to verify all local, state, and any jurisdictional codes and building requirements.

Barn House Company

1900 Louisville Rd. Ste. 107
Bowling Green KY 42101

3D View

Page 1 of 12



3D Drawing are for illustrational
purposes only and do not
represent
the actually finishes and or fixtures.



Lansing Custom Home
32' x 56' Custom Home
1792 sq. ft. Living Area
28' x 32' Garage

Initial Doc. Date: 12/03/2024
Revision Date: 03/25/2025
Revision #R1f

This document is for illustrational purposes only (it has not been reviewed by an architect or engineer unless otherwise stated in or on this document) and should not be relied on for any purpose other than illustration and general layout of building.

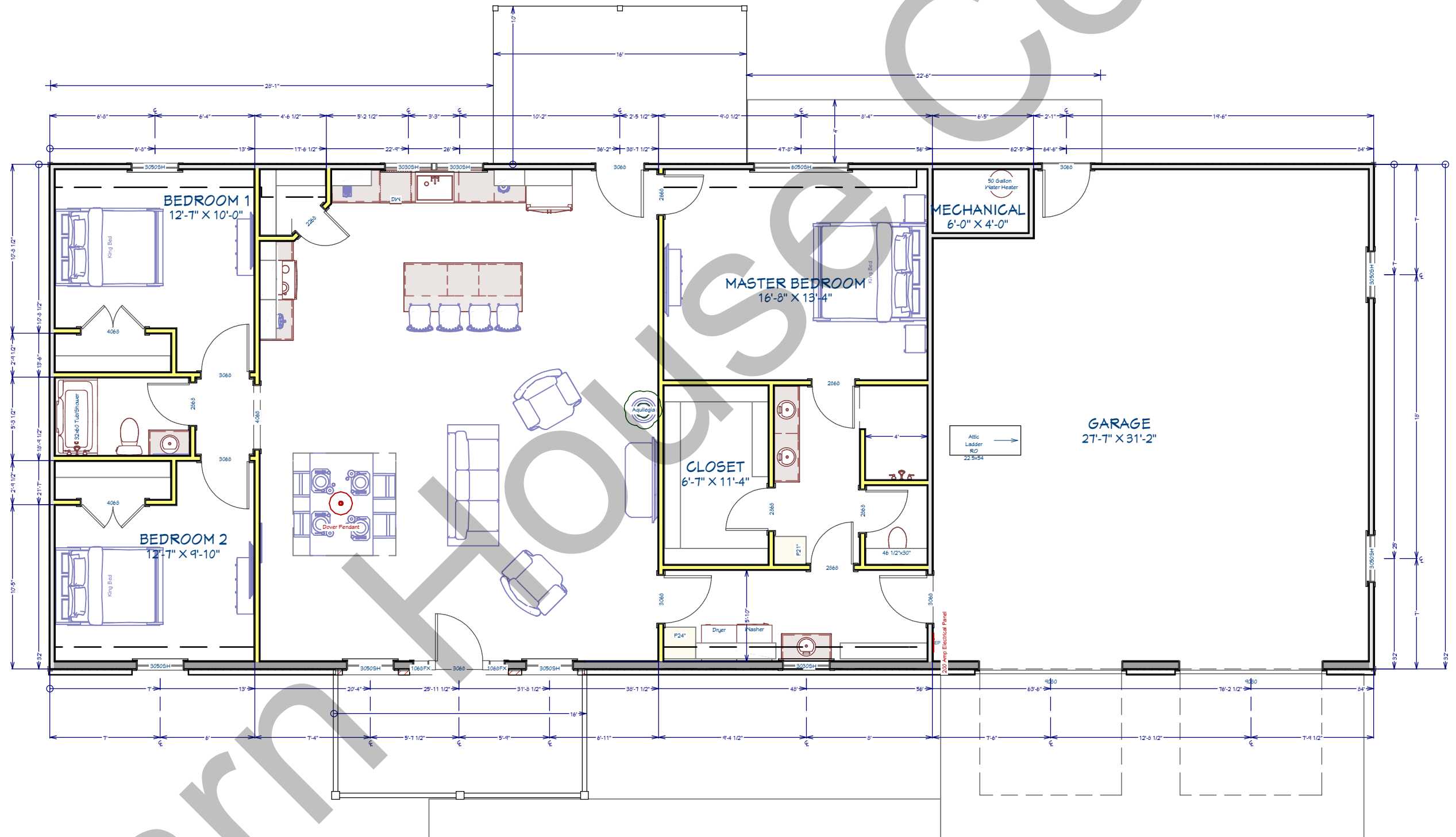
Barnhouse Co., and affiliates assume no liability or responsibility for any mistakes, or errors herein.

All rights reserved by Barnhouse Co. This document and the information contained herein are confidential and protected from disclosure pursuant to Federal law. Use, dissemination, or copying of this information is strictly prohibited. If you received this document in error, please erase all copies and attachments and notify the sender immediately.

Customer Responsible to verify all local, state, and any jurisdictional codes and building requirements.

Barn House Company
1900 Louisville Rd. Ste. 107
Bowling Green KY 42101

Full Layout
Page 2 of 12





Lansing Custom Home

32' x 56' Custom Home
1792 sq. ft. Living Area
28' x 32' Garage

Initial Doc. Date: 12/03/2024

Revision Date: 03/25/2025

Revision #R1f

This document is for illustrational purposes only (it has not been reviewed by an architect or engineer unless otherwise stated in or on this document) and should not be relied on for any purpose other than illustration and general layout of building.

Barnhouse Co., and affiliates assume no liability or responsibility for any mistakes, or errors herein.

All rights reserved by Barnhouse Co. This document and the information contained herein are confidential and protected from disclosure pursuant to Federal law. Use, dissemination, or copying of this information is strictly prohibited. If you received this document in error, please erase all copies and attachments and notify the sender immediately.

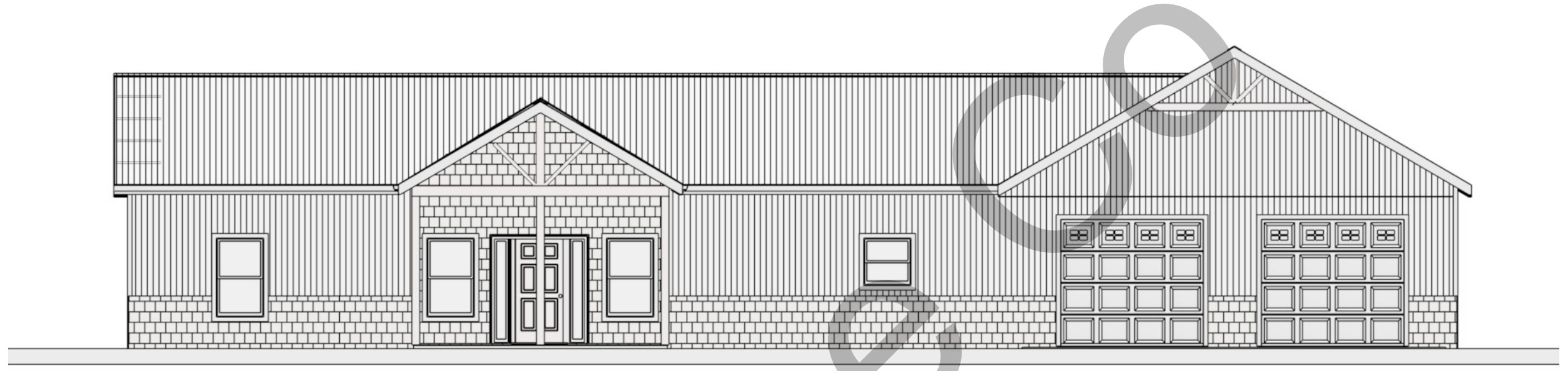
Customer Responsible to verify all local, state, and any jurisdictional codes and building requirements.

Barn House Company

1900 Louisville Rd. Ste. 107
Bowling Green KY 42101

Front Elevation

Page 3 of 12



Exterior Notes

Exterior Wainscot:

- Rock
- 36" Height
- Color: Austin Stone

Decks:

- 6" x 6" Treated Lumber 120" OC
- Decorative Cross Members in Gabled End
- Brackets on Concrete - secured
- 2/12 Slope on Back Deck
- Color: Cedar Stain



Lansing
Custom Home

32' x 56' Custom Home
1792 sq. ft. Living Area
28' x 32' Garage

Initial Doc. Date: 12/03/2024

Revision Date: 03/25/2025

Revision #R1f

This document is for illustrational purposes only (it has not been reviewed by an architect or engineer unless otherwise stated in or on this document) and should not be relied on for any purpose other than illustration and general layout of building.

Barnhouse Co., and affiliates assume no liability or responsibility for any mistakes, or errors herein.

All rights reserved by Barnhouse Co. This document and the information contained herein are confidential and protected from disclosure pursuant to Federal law. Use, dissemination, or copying of this information is strictly prohibited. If you received this document in error, please erase all copies and attachments and notify the sender immediately.

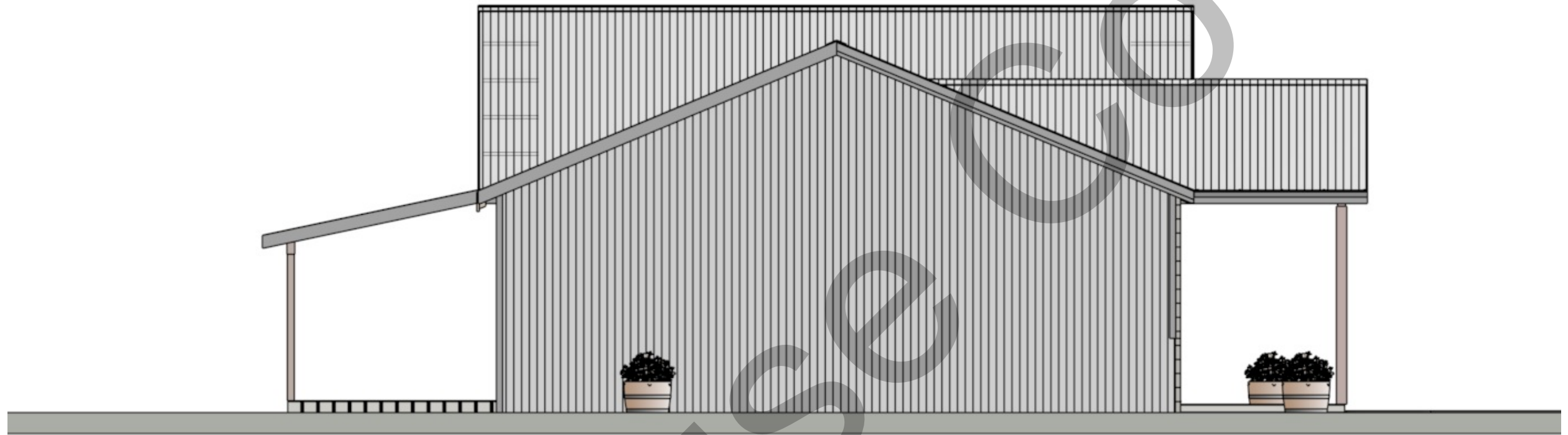
Customer Responsible to verify all local, state, and any jurisdictional codes and building requirements.

Barn House Company

1900 Louisville Rd. Ste. 107
Bowling Green KY 42101

Side Elevation

Page 4 of 12



Vaulted Ceiling in Living Room/Kitchen
3/12 Pitch

Exterior Ceiling:
5/12 Pitch

Front Porch Gable and Garage:
7/12 Pitch



Lansing Custom Home

32' x 56' Custom Home
1792 sq. ft. Living Area
28' x 32' Garage

Initial Doc. Date: 12/03/2024

Revision Date: 03/25/2025

Revision #R1f

This document is for illustrational purposes only (it has not been reviewed by an architect or engineer unless otherwise stated in or on this document) and should not be relied on for any purpose other than illustration and general layout of building.

Barnhouse Co., and affiliates assume no liability or responsibility for any mistakes, or errors herein.

All rights reserved by Barnhouse Co. This document and the information contained herein are confidential and protected from disclosure pursuant to Federal law. Use, dissemination, or copying of this information is strictly prohibited. If you received this document in error, please erase all copies and attachments and notify the sender immediately.

Customer Responsible to verify all local, state, and any jurisdictional codes and building requirements.

Barn House Company

1900 Louisville Rd. Ste. 107
Bowling Green KY 42101

Other Images

Page 5 of 12

