



## The Jackson

1680 Sq. ft (3 Bd 2 Ba)  
30' x 56'  
(No garage/carport)

Initial Doc. Date: 05/31/2024

Revision Date: 03/25/2026

Revision #R10

This document is for illustrational purposes only (it has not been reviewed by an architect or engineer unless otherwise stated in or on this document) and should not be relied on for any purpose other than illustration and general layout of building.

Barnhouse Co., and affiliates assume no liability or responsibility for any mistakes, or errors herein.

All rights reserved by Barnhouse Co. This document and the information contained herein are confidential and protected from disclosure pursuant to Federal law. Use, dissemination, or copying of this information is strictly prohibited. If you received this document in error, please erase all copies and attachments and notify the sender immediately.

Customer Responsible to verify all local, state, and any jurisdictional codes and building requirements.

### Barn House Company

1900 Louisville Rd. Ste. 107  
Bowling Green KY 42101

## 3D View

Page 1 of 12



3D Drawing are for illustrational purposes only and do not represent the actually finishes and or fixtures.



**The Jackson**

1680 Sq. ft (3 Bd 2 Ba)  
30' x 56'  
(No garage/carport)

Initial Doc. Date: 05/31/2024

Revision Date: 03/25/2026

Revision #R10

This document is for illustrational purposes only (it has not been reviewed by an architect or engineer unless otherwise stated in or on this document) and should not be relied on for any purpose other than illustration and general layout of building.

Barnhouse Co., and affiliates assume no liability or responsibility for any mistakes, or errors herein.

All rights reserved by Barnhouse Co. This document and the information contained herein are confidential and protected from disclosure pursuant to Federal law. Use, dissemination, or copying of this information is strictly prohibited. If you received this document in error, please erase all copies and attachments and notify the sender immediately.

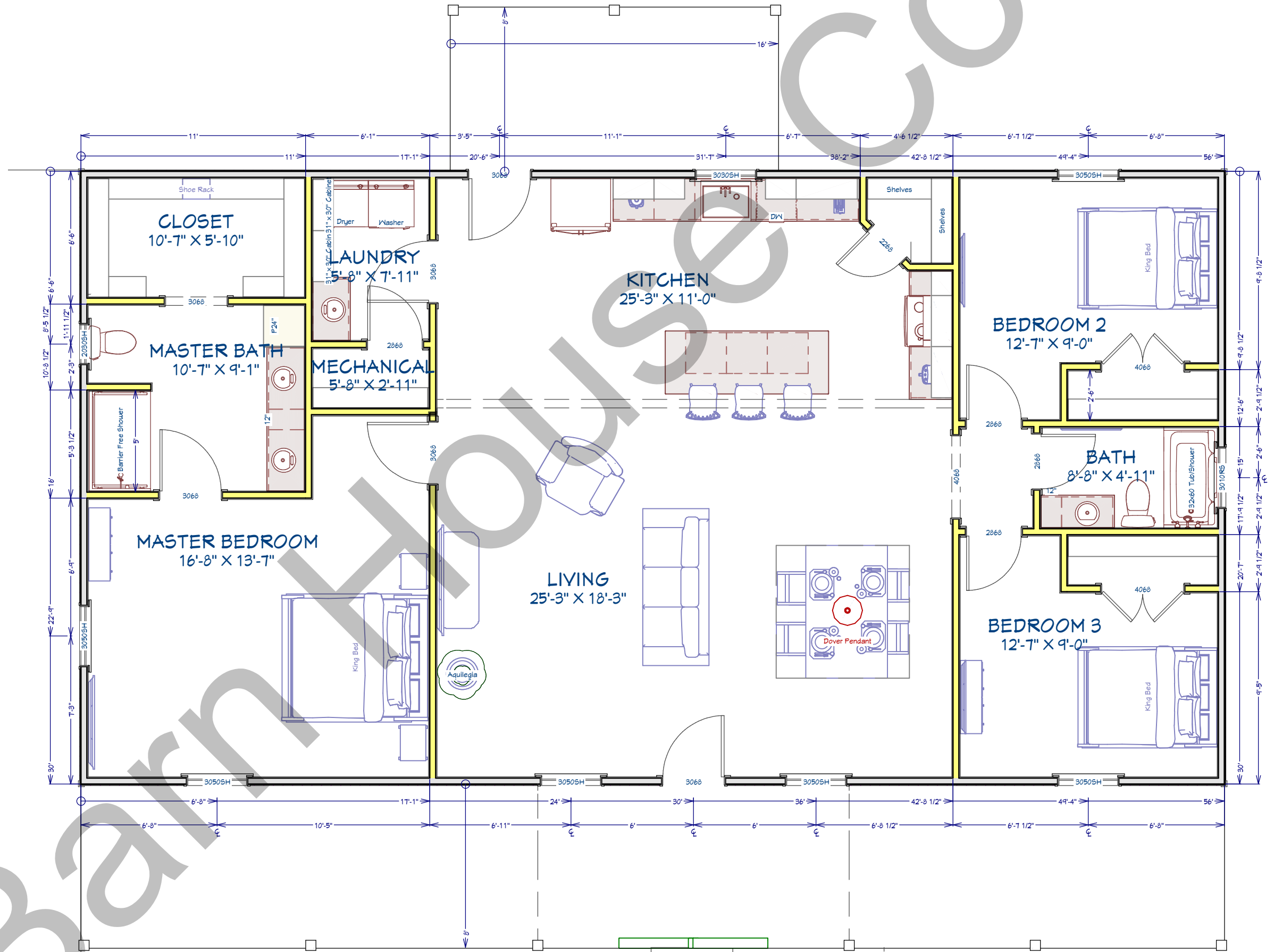
Customer Responsible to verify all local, state, and any jurisdictional codes and building requirements.

**Barn House Company**

1900 Louisville Rd. Ste. 107  
Bowling Green KY 42101

**Full Layout**

Page 2 of 12





### The Jackson

1680 Sq. ft (3 Bd 2 Ba)  
30' x 56'  
(No garage/carport)

Initial Doc. Date: 05/31/2024

Revision Date: 03/25/2026

Revision #R10

This document is for illustrational purposes only (it has not been reviewed by an architect or engineer unless otherwise stated in or on this document) and should not be relied on for any purpose other than illustration and general layout of building.

Barnhouse Co., and affiliates assume no liability or responsibility for any mistakes, or errors herein.

All rights reserved by Barnhouse Co. This document and the information contained herein are confidential and protected from disclosure pursuant to Federal law. Use, dissemination, or copying of this information is strictly prohibited. If you received this document in error, please erase all copies and attachments and notify the sender immediately.

Customer Responsible to verify all local, state, and any jurisdictional codes and building requirements.

Barn House Company

1900 Louisville Rd. Ste. 107  
Bowling Green KY 42101

Front Elevation

Page 3 of 12



#### Exterior Notes

##### Exterior Wainscot:

- N/A
- 36" Height - N/A
- Color: TBD

##### Decks:

- 6" x 6" Treated Lumber 120" OC
- Decorative Cross Members in Gabled End
- Brackets on Concrete - secured
- 1/12 Slope on Back Deck
- 1/12 Slope on Side Deck
- Color: Cedar Stain



### The Jackson

1680 Sq. ft (3 Bd 2 Ba)  
30' x 56'  
(No garage/carport)

Initial Doc. Date: 05/31/2024

Revision Date: 03/25/2026

Revision #R1o

This document is for illustrational purposes only (it has not been reviewed by an architect or engineer unless otherwise stated in or on this document) and should not be relied on for any purpose other than illustration and general layout of building.

Barnhouse Co., and affiliates assume no liability or responsibility for any mistakes, or errors herein.

All rights reserved by Barnhouse Co. This document and the information contained herein are confidential and protected from disclosure pursuant to Federal law. Use, dissemination, or copying of this information is strictly prohibited. If you received this document in error, please erase all copies and attachments and notify the sender immediately.

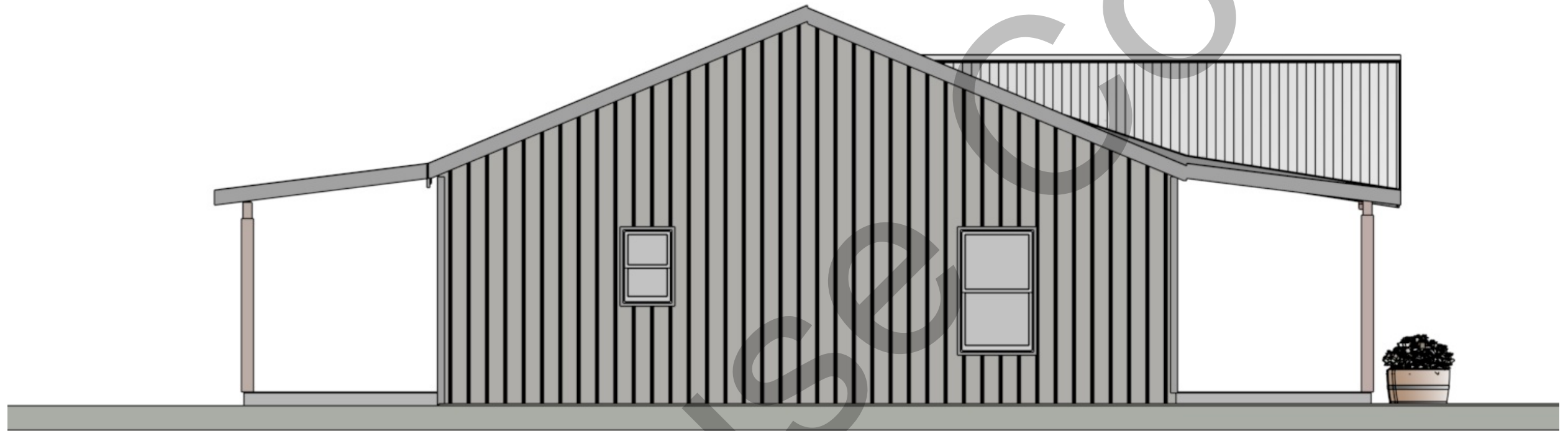
Customer Responsible to verify all local, state, and any jurisdictional codes and building requirements.

Barn House Company

1900 Louisville Rd. Ste. 107  
Bowling Green KY 42101

Side Elevation

Page 4 of 12



Ceiling: 9' Flat

Living/Kitchen Ceiling: Vaulted  
5/12 & 3/12

Roof: 5/12 Pitch

Fascia Height: 108"



### The Jackson

1680 Sq. ft (3 Bd 2 Ba)  
30' x 56'  
(No garage/carport)

Initial Doc. Date: 05/31/2024

Revision Date: 03/25/2026

Revision #R10

This document is for illustrational purposes only (it has not been reviewed by an architect or engineer unless otherwise stated in or on this document) and should not be relied on for any purpose other than illustration and general layout of building.

Barnhouse Co., and affiliates assume no liability or responsibility for any mistakes, or errors herein.

All rights reserved by Barnhouse Co. This document and the information contained herein are confidential and protected from disclosure pursuant to Federal law. Use, dissemination, or copying of this information is strictly prohibited. If you received this document in error, please erase all copies and attachments and notify the sender immediately.

Customer Responsible to verify all local, state, and any jurisdictional codes and building requirements.

Barn House Company

1900 Louisville Rd. Ste. 107  
Bowling Green KY 42101

Other Images

Page 5 of 12

