



**Bosque Casita  
Custom Design**

18" x 50' Apartment  
684 sq. ft. Living Area  
216 sq. ft. Storage Room  
32' x 54' Garage  
12' x 12' Porch  
2772 Total Sq. Ft.

**Initial Doc. Date:** 12/10/2025

**Revision Date:** 01/30/2026

**Revision #R1n**

This document is for illustrational purposes only (it has not been reviewed by an architect or engineer unless otherwise stated in or on this document) and should not be relied on for any purpose other than illustration and general layout of building.

Barnhouse Co., and affiliates assume no liability or responsibility for any mistakes, or errors herein.

All rights reserved by Barnhouse Co. This document and the information contained herein are confidential and protected from disclosure pursuant to Federal law. Use, dissemination, or copying of this information is strictly prohibited. If you received this document in error, please erase all copies and attachments and notify the sender immediately.

Customer Responsible to verify all local, state, and any jurisdictional codes and building requirements.

**Barn House Company**

1900 Louisville Rd. Ste. 107  
Bowling Green KY 42101

**3D View**

**Page 1 of 12**



3D Drawing are for illustrational purposes only and do not represent the actually finishes and or fixtures.



**Bosque Casita  
Custom Design**

18' x 50' Apartment  
 684 sq. ft. Living Area  
 216 sq. ft. Storage Room  
 32' x 54' Garage  
 12' x 12' Porch  
 2772 Total Sq. Ft.

Initial Doc. Date: 12/10/2025

Revision Date: 01/30/2026

Revision #R1n

This document is for illustrational purposes only (it has not been reviewed by an architect or engineer unless otherwise stated in or on this document) and should not be relied on for any purpose other than illustration and general layout of building.

Barnhouse Co., and affiliates assume no liability or responsibility for any mistakes, or errors herein.

All rights reserved by Barnhouse Co. This document and the information contained herein are confidential and protected from disclosure pursuant to Federal law. Use, dissemination, or copying of this information is strictly prohibited. If you received this document in error, please erase all copies and attachments and notify the sender immediately.

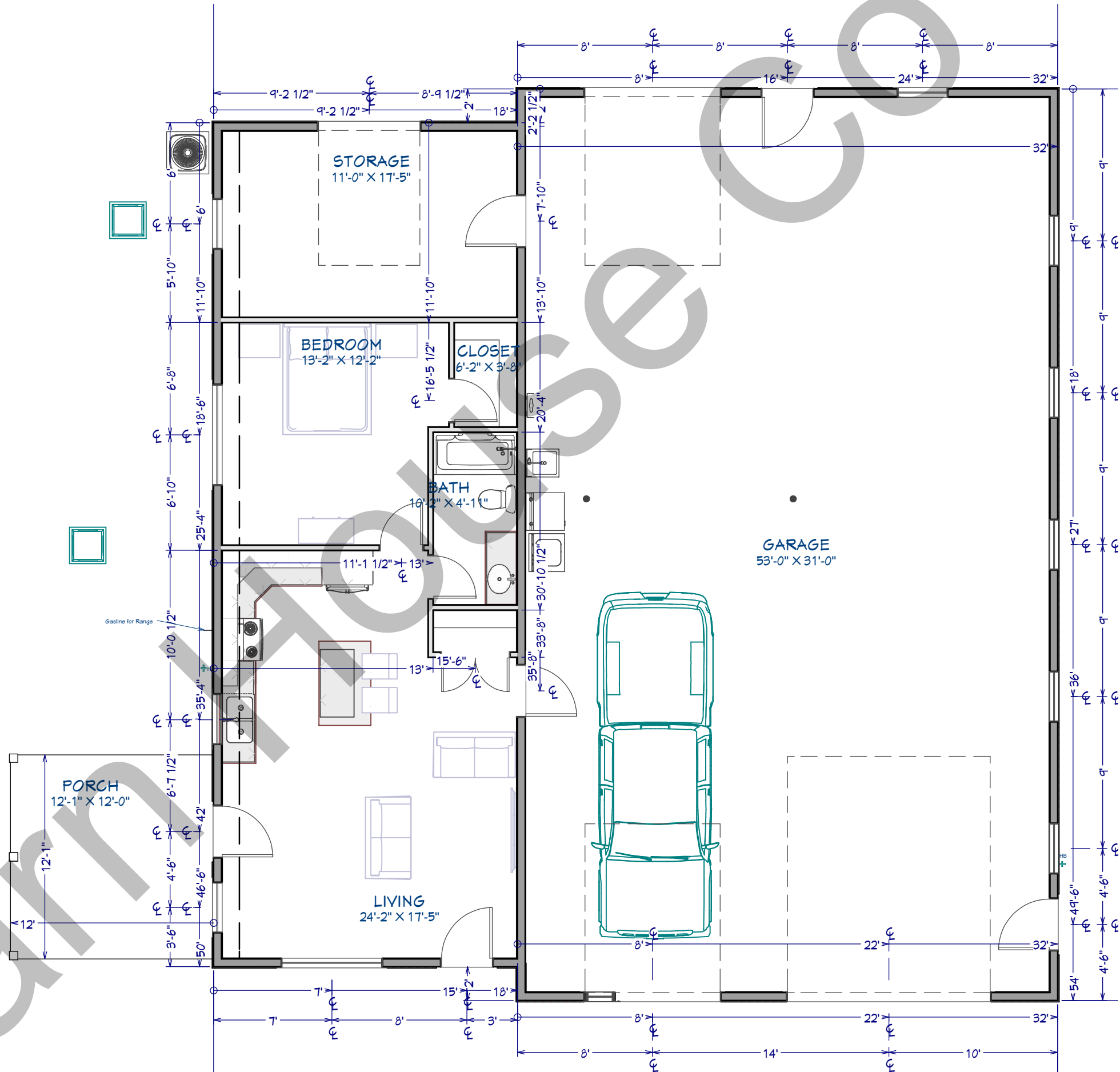
Customer Responsible to verify all local, state, and any jurisdictional codes and building requirements.

**Barn House Company**

1900 Louisville Rd. Ste. 107  
 Bowling Green KY 42101

**Full Layout**

Page 2 of 12





**Bosque Casita  
Custom Design**

18" x 50' Apartment  
684 sq. ft. Living Area  
216 sq. ft. Storage Room  
32' x 54' Garage  
12' x 12' Porch  
2772 Total Sq. Ft.

Initial Doc. Date: 12/10/2025

Revision Date: 01/30/2026

Revision #R1n

This document is for illustrational purposes only (it has not been reviewed by an architect or engineer unless otherwise stated in or on this document) and should not be relied on for any purpose other than illustration and general layout of building.

Barnhouse Co., and affiliates assume no liability or responsibility for any mistakes, or errors herein.

All rights reserved by Barnhouse Co. This document and the information contained herein are confidential and protected from disclosure pursuant to Federal law. Use, dissemination, or copying of this information is strictly prohibited. If you received this document in error, please erase all copies and attachments and notify the sender immediately.

Customer Responsible to verify all local, state, and any jurisdictional codes and building requirements.

**Barn House Company**

1900 Louisville Rd. Ste. 107  
Bowling Green KY 42101

Front Elevation

Page 3 of 12



**Exterior Notes**

**Exterior Wainscot:**

- Rock - 30'
- 36" Height
- Color: TBD

**Decks:**

- 6" x 6" Treated Lumber 120" OC
- Decorative Cross Members in Gabled End
- Brackets on Concrete - secured
- 1/12 Slope on Back Deck
- 1/12 Slope on Side Deck
- Color: Cedar Stain



**Bosque Casita  
Custom Design**

18" x 50' Apartment  
684 sq. ft. Living Area  
216 sq. ft. Storage Room  
32' x 54' Garage  
12' x 12' Porch  
2772 Total Sq. Ft.

Initial Doc. Date: 12/10/2025

Revision Date: 01/30/2026

Revision #R1n

This document is for illustrational purposes only (it has not been reviewed by an architect or engineer unless otherwise stated in or on this document) and should not be relied on for any purpose other than illustration and general layout of building.

Barnhouse Co., and affiliates assume no liability or responsibility for any mistakes, or errors herein.

All rights reserved by Barnhouse Co. This document and the information contained herein are confidential and protected from disclosure pursuant to Federal law. Use, dissemination, or copying of this information is strictly prohibited. If you received this document in error, please erase all copies and attachments and notify the sender immediately.

Customer Responsible to verify all local, state, and any jurisdictional codes and building requirements.

**Barn House Company**

1900 Louisville Rd. Ste. 107  
Bowling Green KY 42101

**Side Elevation**

**Page 4 of 12**



**Carport Ceiling: 9' Flat**

**Living/Kitchen Ceiling: Vaulted  
6/12 & 4/12**

**Roof: 6/12 Pitch**

**Fascia Height: 110"**



**Bosque Casita  
Custom Design**

18" x 50' Apartment  
684 sq. ft. Living Area  
216 sq. ft. Storage Room  
32' x 54' Garage  
12' x 12' Porch  
2772 Total Sq. Ft.

Initial Doc. Date: 12/10/2025

Revision Date: 01/30/2026

Revision #R1n

This document is for illustrational purposes only (it has not been reviewed by an architect or engineer unless otherwise stated in or on this document) and should not be relied on for any purpose other than illustration and general layout of building.

Barnhouse Co., and affiliates assume no liability or responsibility for any mistakes, or errors herein.

All rights reserved by Barnhouse Co. This document and the information contained herein are confidential and protected from disclosure pursuant to Federal law. Use, dissemination, or copying of this information is strictly prohibited. If you received this document in error, please erase all copies and attachments and notify the sender immediately.

Customer Responsible to verify all local, state, and any jurisdictional codes and building requirements.

**Barn House Company**

1900 Louisville Rd. Ste. 107  
Bowling Green KY 42101

**Other Images**

**Page 5 of 12**

